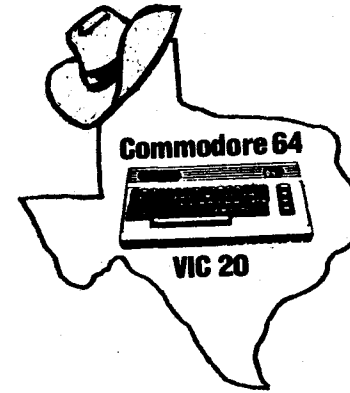


MCCC NEWS



Mid-Cities Commodore Club April 1984 Issue 13

MEMBERSHIP

We now have over 420 members. Yearly dues are \$20.00 payable in January and prorated quarterly. Send dues or questions to the return address on the back cover. Dues cover the costs of running the club including the local chapters, printing and mailing this newsletter, and the acquisition of public domain software.

MEETINGS

Club meetings are held quarterly and chapter meetings are held monthly depending on the desires of each chapter.

COPYRIGHT INFORMATION

The newsletter is not copyrighted. Feel free to copy us, but please acknowledge it.

IN THIS ISSUE:

COMAL FLOWCHARTING
PRINTING COLUMNS
CHOOSING SOFTWARE
NEWing DISKS

REVIEWS:

The Transactor
Comuserv's Vidtex
Printer Utility Program
and much more.

MCCC
Mid-Cities Commodore Club
Post Office Box 1578
Bedford, Texas 76021

DON B. BENNETT
4115 BROOKMOOR
ARLINGTON TX 76016

BULK RATE
U.S. Postage
PAID
Bedford, TX
Permit No. 32

COMING UP

APRIL							MAY						
S	M	T	W	T	F	S	S	M	T	W	T	F	S
1	2	3	4	5	6	7			1	2	3	4	5
8	9	10	11	12	13	14	6	7	8	9	10	11	12
15	16	17	18	19	20	21	13	14	15	16	17	18	19
22	23	24	25	26	27	28	20	21	22	23	24	25	26
29	30						27	28	29	30	31		

- April 13 Newsletter Mailed
- April 14 Grand Prairie Chap. Meeting 3:30 PM
Grand Prairie Memorial Library
- April 21 MCCC Quarterly Meeting 1:30 PM
Hurst Recreation Center
- April 23 Ft. Worth Chapter Meeting 7 PM
Precinct Garage # 1
- April 24 Grand Prairie Chap. Meeting 6 PM
Grand Prairie Memorial Library
- April 27 May Newsletter Deadline
- May 5 Board of Directors Meeting 10 AM
Hurst Recreation Center
- May 12 Grand Prairie Chap. Meeting 1:30 PM
Grand Prairie Memorial Library
- May 19 HEB Chapter Meeting 1:30 PM
Hurst Recreation Center
- Arlington Chapter Meeting 1:30 PM
Arlington Community Center
- Ft. Worth Chapter Meeting 1:30 PM
General Dynamics Rec. Area Room 2

President's Column

The quarterly meeting is coming up Saturday, April 21. It's been three months since we met under one roof and I'm looking forward to seeing everyone again.

We've planned a special meeting for you. Ken Widner, activities chairman, and others have been busy getting together a series of Mini-Workshops with informative and intertaining presentations. The presentations will be repeated to allow attendance of three of the workshops. Topics will include:

- Shortcuts and Hints for C'64 - Garry Wordelman
- Spreadsheets Display - Cory Scott
- Serial and Parallel buss - Al Frigola
- Epyx Software Demo - Jim Mertz
- Drawing Packages - Brian Foley
- Dan Braman

There's sure to be something of interest for everyone.

The librarians will be located in a central area at the meeting for copying the library. They have also come up with a plan to facilitate disk orders. Be sure to read the Revised Library Rules at the end of this newsletter. It includes order forms and instructions. If you have any questions, contact your librarian before the meeting Saturday. I am happy to report that we have some additions coming to the library; Al Todd of Arlington has donated 21 disks, Francine Wharton arranged for an exchange with the Austin Users Group, and John Hand has made arrangements for an exchange with SCOPE of Dallas. I know everyone appreciates their efforts for the club.

The MCCC was invited to participate in the KMEZ Computer Fair in Dallas, Mar 30 - Apr 1. I want to thank those members who helped man the booth (and those who helped woman the booth, too).

See you all Saturday.

Diane Dews

A CHECKLIST OF ESSENTIAL & DESIRABLE FEATURES

WORD PROCESSING

Essential Features:

- * Mail/merge interface with a quality database program.
- * Support underlining and boldface capabilities.

Desirable Features:

- * Eighty column screen.
- * Similarity between the material on the screen and in printed form. The user should be able to view the text on the screen without seeing printer control characters. Underlines and boldface should be seen directly on the screen, or at least highlighted with their special characteristic indicated on the status line.
- * Utilization of special function keys to reduce the overall number of keystrokes required.
- * Column formatting to help prepare financial statements.
- * Fancy printing capabilities such as proportional spacing and right justification.

DATABASE PROGRAMS

Essential Features:

- * Mail/merge with a word processor.
- * Ability to handle at least 30 fields.
- * Multiple field sort and select criteria.
- * Form and report generation capabilities.
- * Math functions with calculated fields.
- * File reorganization capability. This enables users to add another needed field (which was not included when the file was originally established) to the file without losing any of the existing data.

Desirable Features:

- * Note fields. These allow data to be entered into the records in the form of a series of notes in the same way you write comments on a regular file folder.
- * Non-unique key fields.
- * Menu or graphic icon prompts.

TV OR MONITOR?

A TV set doesn't have the high quality resolution that a monitor has. One disadvantage of television sets is that they are not designed to be viewed at close range (as computers are.) Extensive use can result in fatigue and eyestrain. Monitors have better resolution and provide sharper letters and graphics. This consideration is an important one especially for the user who plans to operate the computer for long periods of time.

Monitors are available as shown+

- * Monochrome: Lowest cost and available in one phosphor color either white, amber or green.
- * Color: Better for graphics use than text.
- * Red-Green-Blue+ Both excellent resolution and color graphics, but more expensive.
- * Combination: A relatively new addition, it provides a high quality TV picture and color component monitor.

CONNECTOR DATA

If you want to make some of your own cables, following is the data on the types of connectors needed to interface to the C-64.

- * 5 Pin DIN used for Audio/Video
Radio Shack #274-003
- * 6 Pin DIN for Disk/Printer/Power
Switchcraft #12BL6M
- * 7 Pin DIN for Disk/Printer/Power
Switchcraft #156M7M *

This article was reprinted from "THE USERS PORT", the newsletter of the San Fernando Valley Commodore Users Group.

Editorial

From a membership of over 400 individuals and families, only one entry was recieved for the Master Programmer's Contest... It has become more and more difficult to get people to volunteer to help with any phase of the meetings including clean-up... The newsletter editors rarely get more than two articles submitted for the monthly issue...

We intended to write an editorial in this space on "Apathy in the Club" but frankly, we just didn't care.

Printing Columns by H. Wilson

Given are a couple of lines of code that will allow you to always print a given field. That is, if you are working with columns of numbers that you always want to stack in a line as

```
10.37
102.15
etc
```

This code will do it.

There are two decisions the programmer must make. First - how many places to the right of the decimal, and second - how many places in the field.

Lets say we want numbers in fields of 12, 2 decimal places, and the number is A.

```
10 B$="(12 blanks) "   Field Length
20 L =INT(A)           Truncates Decimals
30 L$=STR$(L)         Converts to String
40 R =INT(A*10**2)     Moves Decimal 2 Places And
Truncates
50 R$=STR$(R)         Converts to String
60 D$=RIGHT$(R$,2)    Sets Decimals By Picking two
Digets From Right
70 N$=B$+L$+"."+D$   Puts String Together
80 A$=RIGHT$(N$,12)   Sets A$ Into A Field of 12 -
Right Hand Justified
```

This can be accomplished on a few lines by combining statements.

```
30 L$="(12 blanks) "+STR$(INT(A))+". "
40 D$=RIGHT$(STR$(INT(A*10**2)),2)
50 A$=RIGHT$(L$+D$,12)
```

Putting it into more general terms we can make it subroutine. If we let:

```
X = the number
ND= the number of decimals
NF= the field length
```

```
1000 REM - THIS ROUTINE RETURNS XXX.XX
1010 L$=""
1020 FOR IO=1 TO NF
1030 L$=L$+" "
1040 NEXT IO
1050 L$=L$+STR$(X)+". "
1060 D$=RIGHT$(STR$(X*10**ND)),ND)
1070 X$=RIGHT$(L$+D$,NF)
1080 RETURN
```

This can now be executed from any section of the program as:

```
110 X=P : ND=2 : NF=12
120 GOSUB 1000
130 P$=X$
.
.
190 X=I : ND=0 : NF=4
200 GOSUB 1000
210 I$=X$
.
.
250 PRINT I$;P$
```

Given is an example program that demonstrates this technique.

```
5 OPEN 4,4,2
10 REM THIS PROGRAM IS AN EXAMPLE OF PRINTING
15 REM COLUMNS OF NUMBERS.
20 REM IT WILL CALCULATE AND PRINT THE INTEREST
25 REM AND AMOUNT OF INVESTING $1000 AT 12.5%
30 REM INTEREST OVER TEN YEARS.
40 REM I IS THE YEAR
50 REM IN IS THE INTEREST
60 REM P IS THE TOTAL AMOUNT
100 P=1000
105 PRINT#4,"YEAR INTEREST AMOUNT
110 FOR I = 1 TO 10
120 IN=P*.125
130 P=P+INT
140 X=I:ND=0:NF=4
150 GOSUB 1000
```

```

160 I=X$
170 X=L:ND=2:NF=10
180 GOSUB 1000
190 IN=X$
200 X=P:ND=2:NF=12
210 GOSUB 1000
220 P=X$
230 PRINT#4,I$:IN$:P$
240 NEXT I
244 PRINT #4," "
245 CLOSE 4
250 END
1000 REM THIS ROUTINE RETURNS XXX.XX
1010 L$=""
1020 FOR IO = 1 TO NF
1030 L$=L$+" "
1040 NEXT IO
1050 L$=L$+STR$(INT (X)) + "."
1060 D$=RIGHT$(STR$(INT(X*10JND)),ND)
1070 X$=RIGHT$(L$+D$,NF)
1080 RETURN *

```

Loading ML Programs

Frequently you will see instructions on disk or cassette programs of the C-64 or VIC to append the load command with ",1". This secondary command turns off the auto relocater and loads the file where it was saved from previously.

With machine code files it would be disastrous to allow relocation to occur because BASIC thinks that the program is a BASIC program and walks through changing what it thinks are the line pointer/links. This is certain death unless a special BASIC front end program is in place; then BASIC will walk through the short program to its end and not get into the machine code following.

If a BASIC program had been previously been saved by the same machine (and memory configuration in the VIC) then the program can be loaded with or without the ",1" command since the line links are correct to start with.

This article was reprinted from "THE USERS PORT", the newsletter of the San Fernando Valley Commodore Users Group. *

NEWing Disks by Tom L. Och

Formatting (NEWing) disks is the process whereby the track and sector road map is magnetically marked on the disk. This process takes about one minute and makes no use of index holes (you can in fact use hard sectored disks in a CBM drive).

The difficulty exists in the semantics of the 1541 disk drive manual. The problem is that the manual suggests that the user could issue the following command to New the disk:

```
PRINT#15,8,15,"NO:disk name,XX"
```

Since the "OPEN15,8,15" command had not been issued the computer will report a "FILE NOT OPEN ERROR". The solution is to issue the OPEN command then the NEW command. You can shorten the syntax to+

```
OPEN15,8,15."NO:disk name,XX"
```

Once the OPEN command is issued the channel will stay open until a program is loaded or the computer is reset at which time all channels are closed.

Another hint for the brave: You can turn off and on the disk drive or reset the computer with a disk in the drive. The only problem will be resetting the disk when it is active (reading or writing). The disk may write over wrong tracks if you do this. *

This article was reprinted from "THE USERS PORT", the newsletter of the San Fernando Valley Commodore Users Group.

New Mail List

The MCCC has recently switched to a new mail list and sorting program. There are bound to be some unavoidable errors when anyone enters over 400 names and addresses. Please be patient with us and report any problems or errors in your mailing address. Thank you.

COMMON FEATURES - With the wealth of special features it seems hardly worth mentioning, but yes, you can set screen colors, baud rates, stop bits, duplex and even whether x-on/x-off protocol is in effect. Formatting end-of-line is also available.

DISK FEATURES - You can get a disk directory or delete disk files without leaving Vidtex. One very nice disk feature - once Vidtex is loaded, you don't need the Vidtex disk in the drive and so you don't find yourself repeatedly swapping diskettes.

SPECIAL FEATURES - Some truly special features make Vidtex the only way to fly when using Compuerv. With Vidtex, Compuerv knows all the commands to clear your screen, control colors, format your screen, etc. This results in much more readable displays. Some Compuerv functions even store screens in your computer's memory so that the constant data doesn't have to be sent each time. This means faster operation and lower Compuerv bills. Because of the special protocol, files from Compuerv can be downloaded with no errors! I recently downloaded 'Star Trek' which fills about 67 disk blocks. It ran the first time with no tribbles at all.

That's not all but it is enough! You are probably expecting a \$99 price tag but I have good news there too. It sells for only \$39.95. If you are a Compuerv user it is well worth the price. If you only use the local BBS's, it is still a fine terminal program and is better than the others I've seen (with the possible exception of the \$149. Super Term.) *✻

This article was reprinted from "THE USERS PORT", the newsletter of the San Fernando Valley Commodore Users Group.

TPUG OFFER

Are you interested in joining the Toronto Pet Users Group (TPUG)? The MCCC will receive one free disk for the club library for every 20 persons who join and you will receive a \$5.00 discount on the membership fee. Contact one of the club officers if you are interested.

Many people have asked me about a good terminal program that included upload and download capability. I have finally found it! The Vidtex program sold by Compuerv contains all of the commonly desired features and many uncommon ones. Here's a summary of the features.

AUTODIAL - when used with the 1650 Automodem the program can dial the phone for you. When used with the Vicmodem (or Hesmodem) this feature cannot be used.

AUTOLOG - you can create any number of disk files which will dial a host computer and perform any necessary log-on procedures automatically. This can be used with either 1650 or 1600 type modems although, of course, the 1600 cannot dial the phone.

UPLOAD - disk files may be loaded into a text buffer which can be from 23-32K. From there it can be sent to the host computer either as a continuous chunk or as prompted, one line at a time. In addition, Compuerv B protocol is available to load disk files directly to Compuerv.

DOWNLOAD - The text being printed on your screen may be captured in the text buffer. You can toggle this buffer open and closed as desired. You can also erase, print, or save the contents of the text buffer to disk as desired. You can review the contents of the buffer on the screen before deciding on your action. Compuerv B protocol is provided for error free downloading of files from Compuerv directly to disk.

PRINTING - In addition to printing the text buffer, you can print the contents of the display screen at any time.

FUNCTION KEYS - You can define the function keys to perform almost any desired function. In addition, you can display their status, save the definitions to disk, or reload such a disk file.

ADVANCED STRUCTURES

Since the first of January I have been programming almost exclusively in COMAL. Although Version 0.14 COMAL has its limitations, I now find myself reluctant to program in BASIC. I have several reasons for this, the strongest is my appreciation of COMAL's powerful structures, e.g., CASE OF and REPEAT UNTIL. These allow me to use structured flowcharting when planning a program; unlike the common box-and-line technique, a structured flowchart "becomes" the program. It can be typed into the program and backed up with the procedures that perform the basic function of each block. The old type of flowchart is usually quite difficult (or impossible) to debug or to code into an actual program. Lines and arrows can be added that make the flowchart work but they increase the difficulty of coding especially in BASIC 2.0. Structured flowcharts, on the other hand, must form a contiguous block when completed just as the lines of a program form a contiguous set of instructions. By the way, I'm not pushing detailed flowcharting as a requirement for good programming. As you will see, my flowcharts do not give full detail to the program. I do however, find it beneficial to organize my ideas so that I don't get lost in mid-program.

THE BUILDING BLOCKS

The basic unit of a structured flowchart is the block. The block depicts a function to be performed:

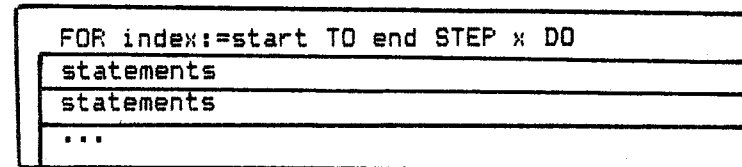
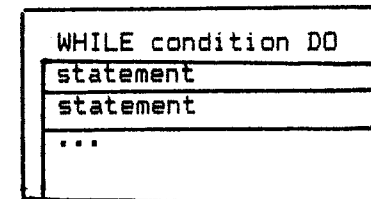
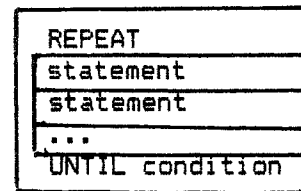
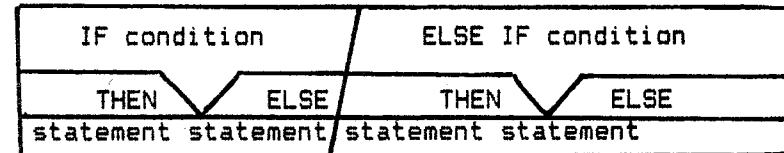
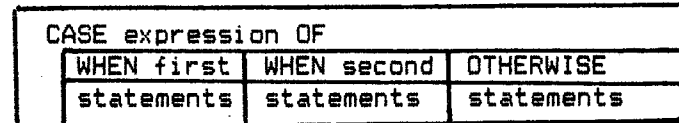
GET DATA

A program is made up of blocks stacked one upon the other:

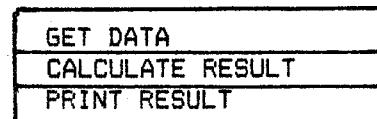
GET DATA
CALCULATE RESULT
PRINT RESULT

As structures are added the chart grows more complex, but a properly designed program can still be put together to form one contiguous block.

In a flowchart the structures of COMAL are represented as:



The only structures I haven't listed are PROCEDURE and FUNCTION. These are actually subprograms, so they look just like programs. For example, our program:



is actually made up of two procedures and one function. The procedure GET DATA would look like this:

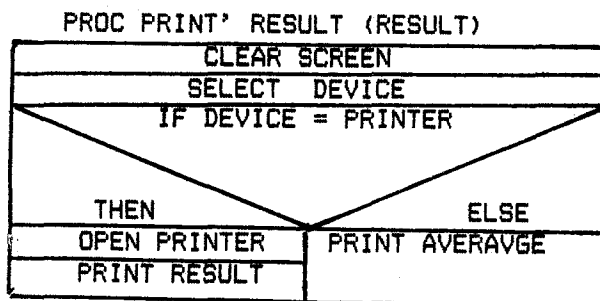


Since CALCULATE RESULT operates on numeric data, it can be written as a function. CALCULATE RESULT would be:

```

FUNC CALCULATE' RESULT
SUM: = ALPHA + BETA
AVERAGE: = SUM/2
RETURN AVERAGE
  
```

Finally, PRINT' RESULT is a little more complex:



The complete program based on the flowchart would be:

```

//NUMBER AVERAGING PROGRAM
//
//THIS PROGRAM WILL AVERAGE
//A PAIR OF NUMBERS
//
GET'DATA(VALUE'A,VALUE'B)
AVERAGE:=CALCULATE'RESULT(VALUE'A<VALUE'B)
PRINT RESULT(AVERAGE)
//
PROC GET'DATA(REF FIRST'VALUE,REF SECOND'VALUE)
CLOSED
INPUT "ENTER 2 NUMBERS":FIRST'VALUE,SECOND VALUE
END PROC GET DATA
//
FUNC CALCULATE'RESULT(ALPHA,BETA)CLOSED
SUM:=ALPHA+BETA
AVERAGE:=SUM/2
RETURN AVERAGE
END FUNC CALCULATE'RESULT
  
```

```

//
PROC PRINT'RESULT(RESULT)CLOSED
PRINT CHR$(147) //CLEAR SCREEN
DIM DEVICE$ OF 1 // FOR INPUT
INPUT "PRINTER OR SCREEN?":DEVICE$
IF DEVICE $ = P THEN
  OPEN FILE 4,"",UNIT 4.WRITE//PRINTER
  PRINT FILE 4: RESULT
ELSE
  PRINT RESULT // TO SCREEN
END IF
END PROC PRINT'RESULT
  
```

I sketched in the lines to show the structures. This illustrates why detailed flowcharts are not required. Listing the program should show everything needed to understand the program. *

Pure Fun by Colin Thompson

Colin Thompson is one of the editors of Commander Magazine. We have reprinted his articles courtesy of "THE USERS PORT", newsletter of the San Fernando Valley Commodore Users Group.

How many joystick doodle programs do you have? I have six. How many will dump your pretty hi-res pix to the printer? I now have one and I really have a good time with it. The program came on a disk full of computer fun from Cardco - The Printer Utility Program. If you have a dot matrix printer, the PUP is sure to liven up those long winter evenings. Each of the various programs on the disk is written for the VIC and also for the C-64. The main program - ~~SCREEN DUMP~~ - is a "hide-away" utility. You load it into the computer and then store it in some out of the way place so the next program you load will not interfere with it. You may hide it in one of four different locations in RAM. After the M/L code is safely tucked away, you may print a screen to the printer either by a SYS command from your BASIC program or by pressing one of the function keys. The program will faithfully print on your printer exactly what is on the screen, be it text or hires graphics.

Three other programs are also included. One is a banner maker, similar to other commercial programs, but this one has three character heights and two different fonts: Computer and Gothic. The joystick doodle program works with the Screen Dump. The last program is a series of nine hires pictures which you may view on the screen or dump to the printer. The user manual is well done and should present no difficulties to inexperienced computerists. The tape version is \$19.95 and the disk version is \$29.95. From Cardco, 313 Mathewson, Wichita KS 67214. Their new phone number is (316) 267-3807. *

The Transactor by C. Thompson

The Transactor, one of the premiere Commodore-specific magazines, has been quietly publishing some of the best technically oriented articles for a long time. Since the Transactor is a Canadian operation, not many Americans have found this gem. It is subscription-only in the United States, but if you like to bathe yourself in Butterfield and the like, then this bi-monthly shower of high tech information will be quite refreshing. It's a slick magazine in more ways than one. The current issue is a complete compendium of memory maps, graphics, screen charts and other inside information on the Big Three: VIC, C-64 and Pet. I predict this will be the most often Xeroxed magazine issue in history. Editor Karl Hildon does a fine job of assembling the brightest Commodore writing talents and putting their fresh ideas out in a readable format. Beginning this spring, the editorial content will begin a shift towards the less experienced Commodore owner. I only have one problem with the Transactor; it's the most borrowed magazine in my library. However when the copies are finally returned, the subscription cards are always missing. The Transactor, 500 Steeles Avenue, Milton, Ontario, L9T3P7. \$15.00 for yearly subscription (6 issues). *

WANTED : January 1984 Issue of Compute's Gazette. Call Luke Dodds at 481-3805.

FOR SALE : Continental Software's "HOME ACCOUNTANT" for C-64, \$40.00. Call Alex Marez at 293-0219.

FOR SALE : Commodore 1525 Printer, 2 months old. Call Norm at 461-4540.

FOR SALE : Apple Loader (to load Apple programs to the C-64) Call John Hand at 656-1805.

WANTED : C-64 CPM. Call John Hand at 656-1805.

FOR SALE : Word Processing Computer System: Letter-quality, daisy-wheel printer, monitor, disk drive and C-64 computer. Excellent for small business or typing service. Entire system \$1,000. Call John Hand at 656-1805.

FOR SALE : New C-64 and 1541 Disk Drive, \$400. for both. Contact Tom Crabtree at 485-6979.

Board Report

The April Board of Directors meeting was held April 7 at the Hurst Recreation Center. President Diane Dews called the meeting to order. Eighteen officers and members were present.

The first topic concerned a new set of procedures for requesting program copies. (Look for this at the end of this newsletter and at the general meeting April 21.) Concern was expressed that the Arlington chapter news was not included in the last newsletter. Gary Wordelman made a motion which was approved to set aside one page for each chapter in the newsletter. David Glazener, Grand Prairie Chapter President, requested a budget of \$20-\$25 for advertising and postage to send materials to prospective members. Bruce Nelson, Club Treasurer, said this would be done for the next three months and no board approval was necessary.

cont'd on next page...

The Grand Prairie Chapter met on March 10 and March 20 to organize and initiate the activities of their chapter. Officers were elected (see Officer Directory) and policies were set as to the meeting times, programs, etc. The following is a summary of their decisions.

1. MEETING PLACE AND TIME. Until our chapter outgrows the available space, we will continue to meet at the Grand Prairie Memorial Library. We will meet twice monthly, the second Saturday from 1:30 to 5:00 PM and the fourth Tuesday from 6:00 to 9:00 PM.

2. CHAPTER TRAINING. Russell Rahn will charge \$25. per person for conducting a class in COMPUTER LITERACY. \$5 of the tuition fee will be given to the chapter treasury. The first class was held March 24 from 9:00-11:00 AM. The classes will be held for 8 consecutive Saturdays, excluding April 14. (Space is not available.)

3. LIBRARY. Members are encouraged to donate programs to the library, especially those programs written by members of the club. It is hoped that the authors of such software will give their permission to share their work with the entire club.

Grand Prairie members please note that the next chapter meeting April 14 will begin at 3:30 PM instead of the usual time.

Board Report cont'd

LeRoy Baker, HEB Chapter President, asked if membership directories could be published and made available to club members. Bruce Nelson said he would have the membership list complete and up-to-date within a week at which time a membership directory could be published. Diane Dews announced our thanks to Dana Taylor for accepting the position of Club Secretary. A motion was passed to provide Club T-shirts (cost \$63) to each of the Club Officers to help identify them at the meetings. A motion was passed to purchase "SUPERCOPY" at a cost of \$43. The disk will be used by the Arlington Chapter but may be requested by the other chapters whenever needed. Diane Dews stated that incorporation procedures should be completed by April 21. The meeting was adjourned.

In addition to the "OLD" and "NEW" Library Catalogs, the MCCC Library now contains the following programs on disk.

"Use & Ref Guide"	E4	Roy Wagner	C64
"Business"	B2	TPUG	C64
"Best Editors"	10	TPUG	C64
"Oct. '83"	T2	TPUG	C64
"64 Forth"		TPUG	C64
"Public Domain 64"	C1	-	C64
"64 Collection #2"	C2	-	C64
"Word Processor"	WP	-	C64
"COMAL 64"		TPUG	C64
"Oct. '83 Pet"	T2	TPUG	Pet
"Best Utilities"	X1	TPUG	VIC
"Best Music"	X2	TPUG	VIC
"Public Domain"	V0	-	VIC
"Public Domain"	V1	-	VIC
"Public Domain"	V3	-	VIC

†Some run on the C64.

* * * * *

Please note that the newsletter deadline for the May issue will be April 27. The editors are always willing to publish uncopyrighted material that is submitted by the members. As the club has expanded in membership, the job of publishing and distributing the newsletter has grown beyond the scope of two people working on weekends. To ease this problem and to insure the continued quality of the newsletter please submit your articles in camera-ready form. For the standard Pica type set please use a 48 column format. For the Elite type set you may use a 56 column format. It will also be helpful to submit two copies of the article reproduced in the darkest print available. Thank you very much for your assistance. We are working very hard to improve the quality of your newsletter.

* * * * *

The following TPUG disks are needed for the library.

U1	E4	S1	S2	S3	G1	G2	G3
G4	G5	G6	G7	G8	G9	GA	B1
X2	TS	TT	TU	TV	T1	T3	T4
T5	T6	T7	(c)	83	Contest		

If you have any of these disks and are willing to share them with the club please notify one of the librarians.

We now have "Super Copy" which enables us to copy a whole disk in less than 10 minutes, as opposed to 30 or 45 minutes. Everyone is encouraged to bring their computers to each meeting and copy some of the disks you desire for your library. This in addition to the four disks you may request copied from the library. I think you will find it worth the little extra effort as new disks are arriving all the time.

The meeting programs will be planned according to your interests, please give your suggestions to Clem Countess.

May 5th meeting will be at 1:30 at the Arlington Community Center. The program will be Rev. Patrick McCoy who will discuss data base and interaction with word processor.

ARLINGTON CHAPTER MINUTES - MARCH

The March meeting of the Arlington chapter of the MCCC was called to order on March 17, 1984 by the chapter president. The minutes of the February meeting were then read by Bill Raetze. Clem Countess made an announcement that he would be willing to offer help on a personal basis to new Commodore users. A representative from Babbage software made the announcement that copies of Flight Simulator would soon be available and that club members could place orders at a \$10. discount. The floor was then given to Dan Branam who gave a very interesting demonstration of the Koala Pad. Following the normal question and answer period, the meeting was adjourned to software exchange.



If you have any objection to having your name, phone number or address published in a list of members, please contact your chapter president. The chapters are preparing a roster for each chapter so that members may contact others in their neighborhood for help and assistance. If you do not want this information published please let your president know as soon as possible.

MCCC CLUB OFFICERS

PRESIDENT	Diane Dews	485-4747
VICE-PRESIDENT	Ken Widner	924-8948
TREASURER	Bruce Nelson	498-0899
SECRETARY	Dana Taylor	457-9070
CO-LIBRARIAN	Leonard Parker	292-1090
CO-LIBRARIAN	Jesse Carden	838-9530
EDITORS	Barbara and Michael Cramer	284-3565
EDUCATION CHAIRMAN	Joe Kent	281-7506
PAST PRESIDENT	Garry Wordelman	281-7457

CHAPTER OFFICERS

Hurst-Eules-Bedford

PRESIDENT	Roy Baker	283-0324
VICE-PRESIDENT	Cary Blocker	838-6252
TREASURER	Bruce Nelson	498-0899
SEC/REPORTER	Brent Metts	268-8374
LIBRARIAN	Dan Branam	283-3621
LIBRARIAN	Roger Hoggard	281-2608
LIBRARIAN	Mike Swain	498-4244
VIC 20 LEADER	Cary Blocker	838-6252
C-64 LEADER	David Rye	284-5672
C-64 LEADER	Brian Foley	498-6305
C-64 LEADER	Dan Branam	283-3621
MODERN LEADER	Roger Hoggard	281-2608

Arlington

PRESIDENT	Francine Wharton	467-7559
VICE-PRESIDENT	Clem Countess	275-5072
SECRETARY/TREASURER	Bill Raetze	465-2014
REPORTER	Dana Taylor	457-9070
LIBRARIAN	Roy & Judy King	451-7610
ASST. LIBRARIAN	Pete Link	261-5328
C-64 LEADER	Lyle DeVore	641-1746
C-64 LEADER	Gerry Peterson	465-4216
C-64 LEADER	Harold Williams	483-0537

Ft. Worth

PRESIDENT	Larry Wiest (Fuzzy)	927-8301
VICE-PRESIDENT	Mary Hageneyer	732-0982
REPORTER	Scott Payne	292-2106
SECRETARY	Cory Scott	551-5538
LIBRARIANS	Jill and Gary Campbell	297-4125
C-64 LEADER	David Wiley	244-3700
C-64 LEADER	Larry Magee	246-0746
C-64 LEADER	Lance Franklin	738-8135
C-64 LEADER	Bob Krause	292-6639
C-64 LEADER	Joe Ostrokol	534-1990
VIC 20 LEADER	Wes Hewet	246-9166
VIC 20 LEADER	Bill Aiken	292-0287
VIC 20 LEADER	Charlie Blair	
VIC 20 LEADER	Ellen Triplett	295-4957

Grand Prairie

PRESIDENT	David Glazener	642-3131
VICE-PRESIDENT	George Evans	262-4979
REPORTER	Susan Spencer	642-7385
SEC/TREASURER	Iris Evans	262-4979
LIBRARIAN	Roger Ingersol	263-8509
ACTIVITY CHRMN.	Gary Ritter	262-4884

MARIL EGAN
478-0474



SLINKMAN
ANN Mc GOGAN
261-8883

GARY LINSLE 860-2470
MILLIE STANCLIFF 478-7825
TENNISON SHAWAN
CLAIRE VOUGHT

< Bell

REVISED LIBRARY RULES

FOR LIBRARY COPIES:

The continued growth of our club has necessitated some changes in our "handling procedures." These changes will greatly reduce the handling time required of the librarians for each request. This is the time used in the initial folding, addressing, and stamping of each mailer. By reducing this time, you, the members, will receive your requested copies sooner.

Hereafter, members are requested to furnish a PRE-FOLDED, PRE-ADDRESSED, and PRE-STAMPED mailer with their completed request and blank disks. NEW MEMBERS will be given due consideration and assistance to get started.

NOTE: † Use care in the initial folding of your mailer to guarantee function and prolong life.

‡ Use a straight-edge along the pre-cut fold lines.

† For 2 disks, fold each tab on the 1st and 2nd pre-cut from the middle.

‡ For more than 2, fold on the 1st and 3rd pre-cut.

MEMBER USE OF LIBRARY

1. Review copyright laws.
2. You must be a bonafide member of the MCCC.
3. Members can request as many as 4 copies per month.
4. Copies are whole disks only.
5. Select from "New Catalog," "Old Catalog" or "other."
6. Indicate "New," "Old" or "other." Unspecified is New.
7. Identify disk by 2-character code and name. Ex. GA, GAMES.
8. Use COST CHART to determine cost and postage.
9. Complete request form. MUST HAVE ZIP CODE.
10. Put your name on each disk.
11. Submit completed request, money, blank disks, and pre-addressed stamped mailer to Chapter Librarian.

COST CHART

Number of disks	1	2	3	4
Postage Only	.60	.60	.75	1.00
Postage & Mailer	1.60	1.60	1.75	2.00
Postage/Mailer/Disks	3.50	5.50	7.75	10.00
Disk Only	2.00	4.00	6.00	8.00

CATALOG 2.50
ELEPHANTS \$18

NAME

ADDRESS

CITY

ZIP

MAIL

BRING

MAILER FURNISHED

AMOUNT PAID

1. PRG ID

NAME

NEW OLD OTHER
() () ()

2. PRG ID

NAME

() () ()

3. PRG ID

NAME

() () ()

4. PRG ID

NAME

() () ()

NAME

ADDRESS

CITY

ZIP

MAIL

BRING

MAILER FURNISHED

AMOUNT PAID

1. PRG ID

NAME

NEW OLD OTHER
() () ()

2. PRG ID

NAME

() () ()

3. PRG ID

NAME

() () ()

4. PRG ID

NAME

() () ()